



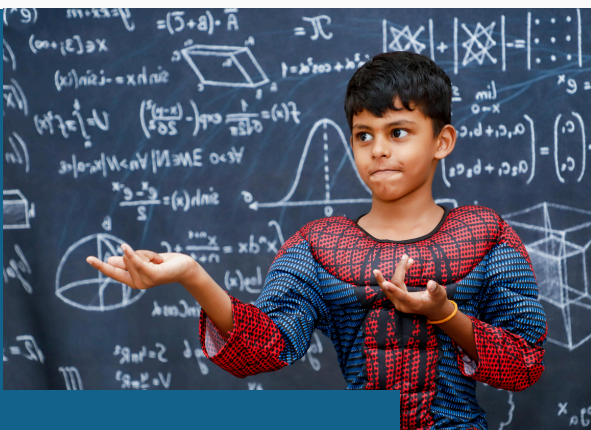
# THE INCLUSION INSIDER

2025 ISSUE #1

APRIL 2025

## 2025 IS OFF TO A GREAT START!

With our SOAR, Reading Rocks, and Executive Skills programs running smoothly and making a meaningful impact on students and families, we're excited to continue the year with upcoming events like Trivia Night and more opportunities to engage our community.



# 35+

STUDENTS & VOLUNTEERS  
REACHED THIS WINTER!



Helping individuals and  
their families who have  
learning disabilities to  
reach their full  
potential.





# TABLE OF CONTENTS

## This issue:

Trivia Night  
PAGE 03

Corporate Donor Thank You  
PAGE 06

Volunteer Spotlight  
PAGE 07

Program Impact & Return  
PAGE 08

Local Events  
PAGE 10

Resource Page  
PAGE 12

Thanking our Community  
PAGE 13

Follow Us!  
PAGES 14



## MESSAGE FROM OUR EXECUTIVE DIRECTOR

Spring is a season of growth, and that's exactly what we're seeing at LDAWC. From new volunteers stepping into leadership roles to the continued success of our programs, it's inspiring to watch this community come together in support of children and families impacted by learning disabilities.

Whether you're joining us for Trivia Night, accessing resources, or spreading awareness, your involvement makes a difference. Thank you for being part of this journey. Read below for important updates and opportunities to connect.

Marciane Any  
Executive Director, LDAWC







**LDAWC** • Learning Disabilities  
Association of Wellington County

*The right to learn, the power to achieve*



## **TRIVIA HOSTS**

**Jeff & Miranda's  
Trivia Nights**

SCAN QR CODE  
OR CLICK IMAGES  
TO GET TICKETS

# 2ND ANNUAL TRIVIA NIGHT

A Fundraising Effort for  
those Impacted by  
Learning Disabilities



**SATURDAY, MAY 24TH, 2025**

**7PM - 11PM**

135 FERGUSON STREET,  
GUELPH, ON N1E2Y7

**\$190 FOR TABLE OF 8**

**\$140 FOR TABLE OF 6**

**\$25 PER PERSON**

Join us for an evening of fun-filled  
activities, good food, drinks, and  
learning more about how you can  
help those with learning  
disabilities!

\*Attendees must be 19+

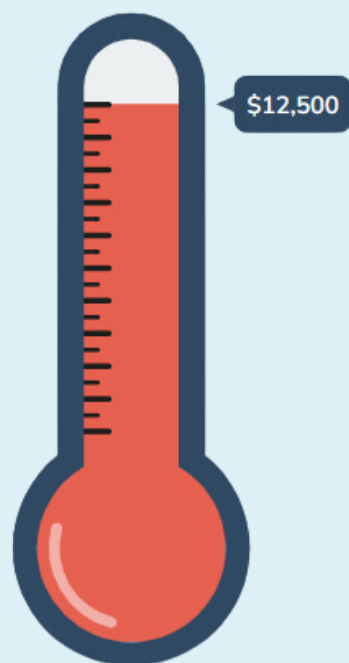


**LDAWC** • Learning Disabilities  
Association of Wellington County

*The right to learn, the power to achieve*

# LAST YEAR:

We exceeded our  
\$5,000 goal and  
raised over \$12,500

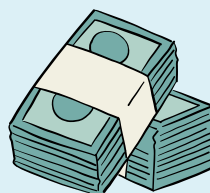


 causeVOX

Exceeded all expectations with...

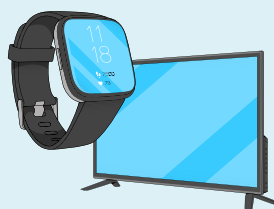


**200 TICKET SOLD**



**\$2,000 RAISED FOR  
THE 50/50 DRAW**

Meaning someone went home  
with \$1,000!



**OVER 25 DIFFERENT  
PRIZES AND SILENT  
AUCTION ITEMS**

Including a new Smart TV, fitness  
watches, and sporting event tickets!

Last year, we exceeded expectations with an unforgettable evening of fun, good food and drinks, community, and friendly competition. This year, we're taking it to the next level—bigger, better, and even more exciting!

Join us once again at the Italian Canadian Club for a night filled with laughs, great company, and brain-busting trivia. Stay tuned for more details, and get ready for an incredible time!

\*Attendees must be 19+

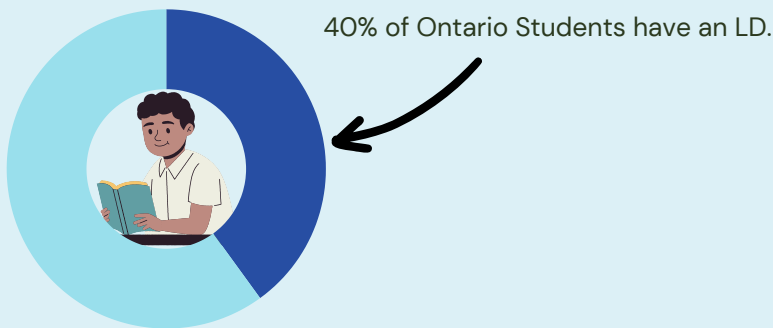




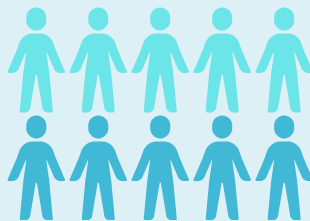
# WHY WE NEED YOUR SUPPORT

Join us for Trivia Night and make a direct impact on students with learning disabilities by helping us keep our programs free and accessible. It's a fun-filled evening where every ticket, donation, and trivia win supports local youth with the skills and resources they need to thrive!

## Why Support us?



The number of youth in Guelph-Wellington County who face significant struggles in school is greater than 4,500.



Reading scores are consistently declining for Ontario students in recent years.

Individuals with learning disabilities are overrepresented in negative statistics like higher dropout rates, mental health struggles, and involvement with the justice system, underscoring the need for better support and resources.



One of the largest barriers families have to accessing resources and support for their child are financial barriers.



## What your support will do

### Provide Free Programming

Allow us to continue offering programming at no cost to our local students



### Expand Support Services

Allow us to expand our support services to offer even more programs, resources, and support for those with LDs and ADHD



### Enhance Resources

Help us enhance our resources by paying for updated books and supplies



### Raise Awareness

Fund community outreach initiatives to spread accurate information about learning differences, let the community know about local resources, and reduce stigma



# Thank You to our Corporate Donors



Dear Corporate Donors,

We want to take a moment to express our heartfelt gratitude for your generosity. Whether through financial contributions or in-kind donations, your support has made a tangible impact—helping us provide free, accessible programming and vital resources to children with learning disabilities and ADHD.

Because of you, students are gaining confidence, families are finding the support they need, and our programs continue to grow. Your commitment allows us to break down barriers and create opportunities for success, ensuring every child has the tools to thrive.

Thank you for being a valued partner in this important work. We look forward to all we will accomplish together in the months ahead!

With appreciation,  
Staff and Board of Directors  
Learning Disabilities Association of Wellington County



Ontario  
Trillium  
Foundation



Fondation  
Trillium  
de l'Ontario

An agency of the Government of Ontario  
Un organisme du gouvernement de l'Ontario





# VOLUNTEER SPOTLIGHT

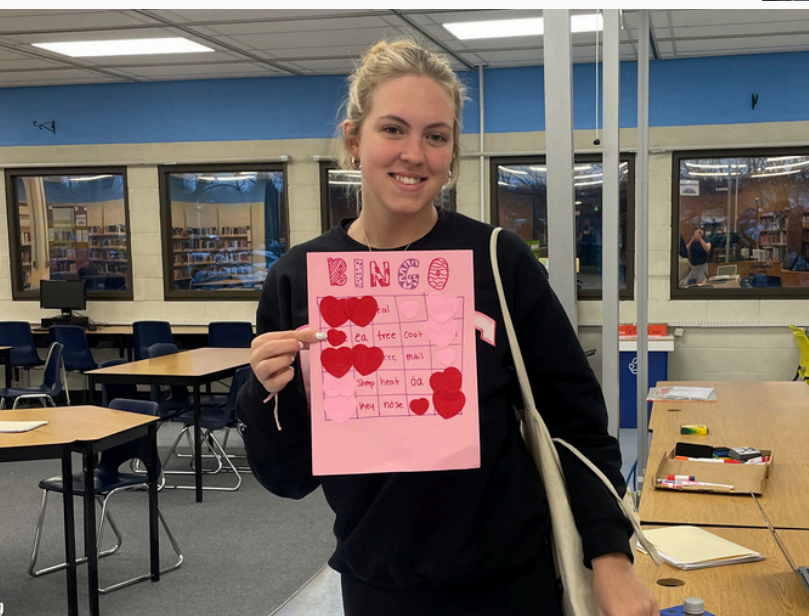


*Kathy Beckwith*

Kathy was one of our lovely Reading Rocks tutors! Kathy always went above and beyond to support her students. She brought her own creativity to the program by supplying additional materials and activities that peaked her students interest. Kathy's energy and passion was contagious and sparked interest, confidence, and growth in her students!

*Sarah Elkins*

Sarah started as a Reading Rocks volunteer and is now a facilitator for the program. She went above and beyond by bringing materials, custom word searches, and games to keep her student engaged. Her creativity, dedication, and willingness to help made her a valuable part of the team, and we're thrilled to have her in this new role!



*Erin Millar*

Erin brings a ton of energy and enthusiasm to her sessions, and it's clear she and her student have a great connection. Her sessions are a mix of learning, games and fun, and she does a great job of both leading and following her student's interests. She makes tutoring more engaging by bringing in fun sensory toys and stuffed animals, incorporating them into the learning activities. She's really made Reading Rocks a fun and exciting place for her student, making her student looks forward to coming to sessions every week!





# OUR PROGRAMMING HAS HAD A POSITIVE IMPACT ON LOCAL STUDENTS & FAMILIES

01.

## Social Skills

"Considering my child struggles immensely with his social skills, they have improved with this program. Thank you for having him and for a lovely teacher. He said that he enjoyed social skills class as it wasn't noisy and a small group of kids."



## Executive Skills

"Thank you so much for your efforts on behalf of our children. They are learning (and are enjoying learning) in your classes."

02.

03.

## Reading Rocks

"So grateful for this program for a crucial time in our son's learning to keep him on track and maintain his confidence in school."



## Reading Rocks

"This program is really great and I can't believe the words they are reading now with more confidence."

04.





Programs  
Will  
Return  
this Fall!



**LDAWC** • Learning Disabilities  
Association of Wellington County

*The right to learn, the power to achieve*



# LOCAL EVENTS

As supporters of the Wellington County Community we are thrilled to highlight a number of upcoming local events that might capture your interest

## SCHEDULE OF LOCAL EVENTS



### **GUELPH TODAY EVENTS CALENDAR**

Looking for engaging activities in Guelph? Check out this calendar for local events and programs that might interest you or your family. Explore what's happening in your community.



### **GUELPH PUBLIC LIBRARY**

Guelph Public Library has countless events and programs that will inspire you to explore, connect and thrive. They even take on individual event suggestions, so be sure to participate!



**Guelph Public Library**  
Explore • Connect • Thrive



### **CAMP KENNEBEC**

Camp Kennebec is an overnight camp in Arden, ON for kids, teens, and young adults with LDs, ADHD, anxiety, OCD, Down Syndrome, and social or behavioural challenges, offering a supportive 2:1 camper-to-staff ratio.





# LOCAL EVENTS



click image to learn more



## IDA Ontario's Navigating Dyslexia Family Conference

presented by { Syllasense

The Navigating Dyslexia Family Conference will focus on supporting parents and caregivers of students with dyslexia.

Sessions will examine dyslexia, how to advocate for children, diagnosis and effective interventions, and supporting students' self-esteem and mental health.

 Friday, April 25, 2025

 9:00 AM - 4:30 PM

Delta Hotels Toronto Airport &  
Conference Centre  
655 Dixon Rd, Toronto, ON  
M9W 1J3



**Register today**

[www.conference.idaontario.com](http://www.conference.idaontario.com)

## Speakers



**Dr. Todd Cunningham**

Dyslexia Demystified



**Daniella Green**

Inspiring Confidence and  
Supporting Grit in Dyslexic  
Children



**Lee-Ann Lear**

What's Changed? Understanding  
Instructional Shifts in Literacy



**Wade Pozimoka**

Defending Your Child's Rights:  
A Legal Perspective



**Stefanie Ricchio**

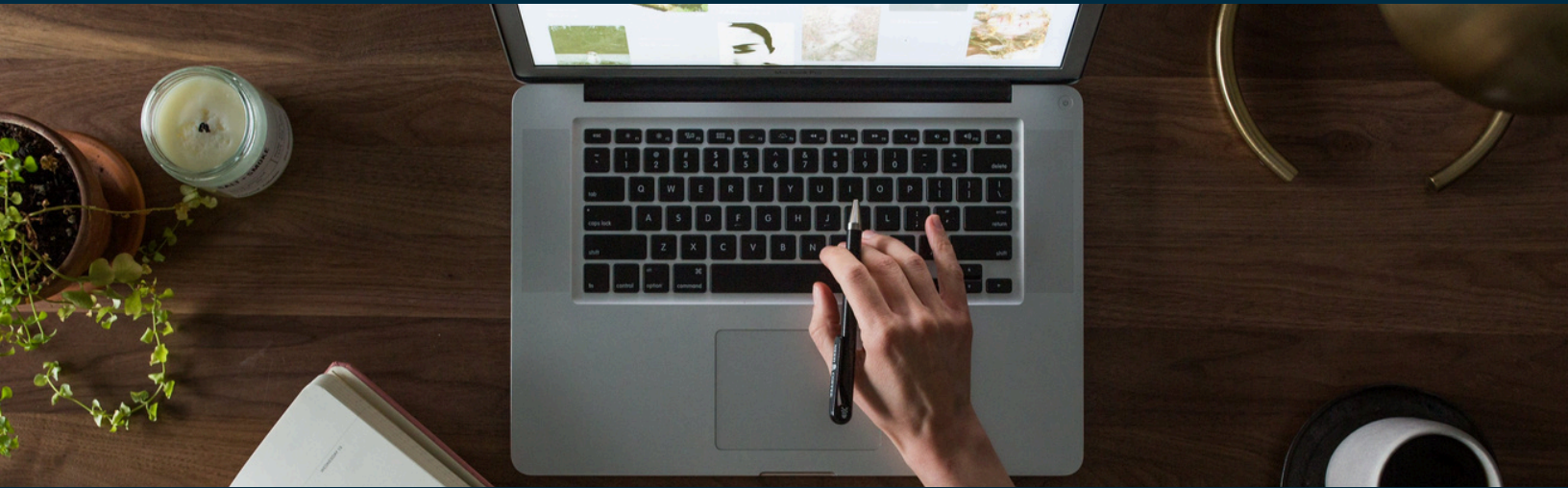
Disability Tax Credit for Families:  
Claiming the Benefits You Deserve



**Alicia Smith**

Impactful Advocacy:  
Supporting Your Dyslexic Child's  
Success in School

# Looking for Local Resources?



## Visit our Resources Page

### Categories

LDAWC Resources  
Educators  
Parents & Caregivers  
ADHD  
Dyslexia  
Kids & Teens  
Post-Secondary  
Service Providers



### LDAWC Resources

Our organization has put together some resources sheets on the following topics about learning disabilities and ADHD. Simply click on a topic below. These sheets include recommended books, websites and articles.

Learning Disabilities | General

Learning Disabilities | Reading

Learning Disabilities | Writing

Learning Disabilities | Mathematics

IEPs & IPRCs

ADHD | Families

ADHD | Adults

Assistive Technologies

Transition | Secondary Education

Transition | Post-Secondary Education

**Click Here** →

Whether you're an educator, parents/caregiver, or someone impacted by learning disabilities and/or ADHD - there's something to support everyone

If you have ideas on additional resources we can include, email us: [info@ldawc.ca](mailto:info@ldawc.ca)





**LDAWC** • Learning Disabilities  
Association of Wellington County

*Thank you*

We're so grateful for this amazing community. Your support helps us continue providing resources, programs, and advocacy for those with learning disabilities and ADHD.

Together, we're making a difference!

Stay connected, and thank you for being part of this journey with us. Have a great summer!

- The LDAWC Team





# FOLLOW US



**@ldawc**



**Learning Disabilities Association  
of Wellington County**



**Learning Disabilities Association  
of Wellington County**



**Eventbrite:  
LDAWC**



**@LDAWellington**



**[www.LDAWC.ca](http://www.LDAWC.ca)**