



# THE INCLUSION INSIDER

2025 ISSUE #2

AUGUST 2025

## FALL IS APPROACHING!!

After a much-needed slower summer season, we're energized and gearing up for a full fall of programming — with both online and in-person options for families. From the return of our SOAR, Reading Rocks, Social Skills, and Executive Skills programs to our upcoming Family Conference and engaging new workshops, there's lots to look forward to as we continue supporting our community.



# 1000+

STUDENTS SUPPORTED IN THE  
LAST 10 YEARS



Helping individuals and  
their families who have  
learning disabilities to  
reach their full  
potential.





# TABLE OF CONTENTS

## This issue:

Fall Programs are Back!!

PAGE 03

11<sup>th</sup> Annual Family Conference

PAGE 5

Fall Workshop

PAGE 06

Summer Highlights

PAGE 07

Local Events

PAGE 13

Resource Page

PAGE 14

Thanking our Community

PAGE 15

Follow Us!

PAGES 16



## MESSAGE FROM OUR EXECUTIVE DIRECTOR

As summer winds down, we're feeling recharged and ready for a full season ahead at the LDAWC. After a slower pace these past few months, we're excited to gear up for fall with both online and in-person programming.

We're also looking forward to connecting with families and community members through our upcoming Family Conference and engaging new workshops designed to inform, inspire, and support.

Whether you're a volunteer, a family accessing support, or someone who shares our mission – thank you for being part of this work. Your involvement truly makes a difference.

Read on for program updates, fall opportunities, and ways to stay connected.

Marciane Any  
Executive Director, LDAWC





# Fall Programs are back!!

We're excited to bring back our Reading Rocks, Executive Skills, Social Skills, and SOAR programs this fall – with options to participate completely online or completely in person. These programs are designed to build confidence, independence, and practical skills for children and youth with learning disabilities and/or ADHD.



All programs will run from October 6 to December 5, on scheduled program days from 6:30 PM to 7:30 PM.

All in-person sessions will take place at John Galt Public School (50 Laurine Ave, Guelph, ON). To help us keep things running smoothly, please be sure you're applying for the format that works best for your family. Once accepted, participants are expected to remain in the same format (online or in person) for the full program term – switching mid-program won't be possible.

If you're unsure which option is the best fit, feel free to reach out – we're happy to help!

## Programs Offered



### Reading Rocks

Helps students develop fundamental literacy skills

Being offered:  
M/W in person  
M/W online

T/Th in person  
T/Th online

[Apply for Reading Rocks](#)



### Social Skills

Helps students with various domains of social engagement

Being offered:  
TBD - in person  
Mondays - online

[Apply for Social Skills](#)



### Executive Skills

Helps students with ADHD work on their executive functioning skills

Being offered:  
Thursdays - in person  
Thursdays - online

[Apply for Executive Skills](#)



### SOAR

Helps students transitioning into high school in Fall 2025 do so more effectively

Being offered:  
Mondays - in person  
Tuesdays - online

[Apply for SOAR](#)



**LDAWC** • Learning Disabilities  
Association of Wellington County

*The right to learn, the power to achieve*



# VOLUNTEERS NEEDED

## We need your help supporting local youth

We're looking for passionate volunteers for our Reading Rocks fall program—supporting kids with learning disabilities build confidence and reading skills.

### Details:

- Runs twice a week (choose Mon/Wed or Tues/Thurs)
- 1 hour per session, for 8 weeks
- Can choose to volunteer for either our in person or online program
- Must attend both days of your chosen schedule
- Ages 16+ (18+ require a Vulnerable Sector Check)
- Training provided—no experience needed!



*Both Online & In Person*

Make a difference this fall!  
Apply now :)

[Click Here to Apply](#)

Have any questions?  
Email: [ldawcrr@gmail.com](mailto:ldawcrr@gmail.com)

”

**My child is excited to  
come to reading rocks  
and often asks when  
we are going next  
—RR Parent**







# FAMILY CONFERENCE



**SATURDAY, NOVEMBER 15, 2025**

**09:00 AM - 04:30 PM**

## **Understanding and Thriving: Mental Health and Learning Disabilities**

Join us for the 11th Annual LDAWC Family Conference, Understanding and Thriving: Mental Health and Learning Disabilities. This year's event features expert-led workshops on navigating school supports, strengthening executive functioning skills, and creating inclusive spaces for our community. Gain practical strategies, connect with others, and leave empowered to support children and youth in meaningful ways.

**Join our email list to stay up to date about  
registration!**

**[JOIN HERE](#)**

# OCTOBER FINANCIAL LITERACY WORKSHOPS



**Christine MacDonald**

CPA, CA, & VP of Finance at Hammond  
Power Solutions

## We are Offering 3 Workshops

### How to Teach Your Kids About Money



Monday, Oct. 20<sup>th</sup>, 2025  
7pm-8pm  
Online

### Pet Shop for 8-11 Years Olds



Thursday, Oct. 23<sup>rd</sup>, 2025  
7pm-8pm  
John Galt Public School

### Budgeting & Expenses for 11-14 Year Olds



Tuesday, Oct. 28<sup>th</sup>, 2025  
7pm-8pm  
John Galt Public School

## What You'll Learn:

- ✓ How to raise money-smart kids and build lifelong financial habits.
- ✓ Budgeting basics and making smart spending choices.
- ✓ Age-appropriate money skills for children, teens, and adults.
- ✓ Practical tips on allowance, credit, virtual spending, and more.

**FREE EVENTS!**

Registration opens in September





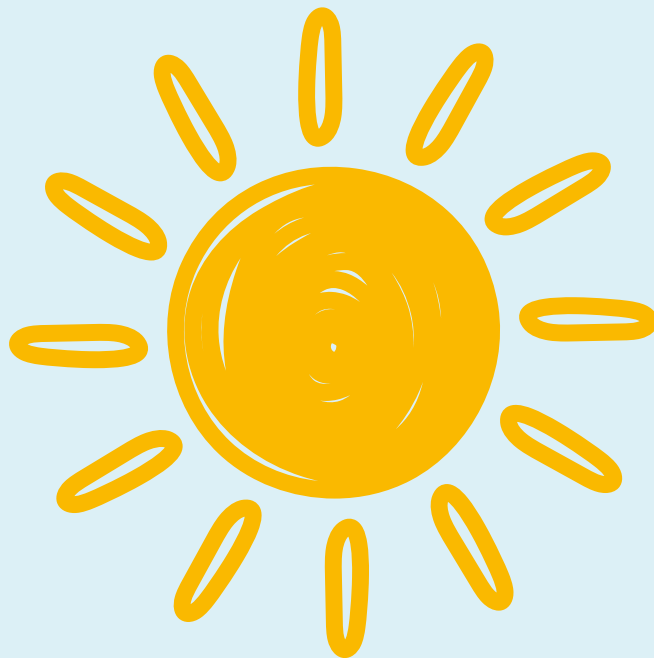
**LDAWC** • Learning Disabilities  
Association of Wellington County

---

*The right to learn, the power to achieve*

---

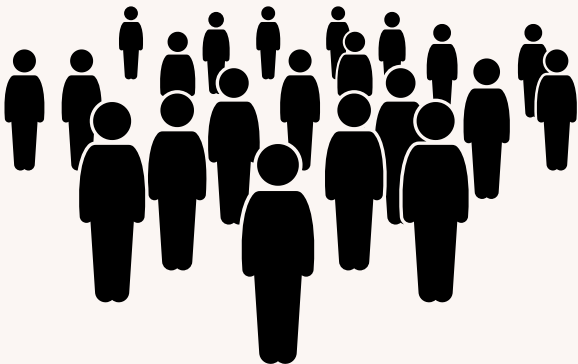
# SUMMER HIGHLIGHTS



# 2025 Trivia Night



## 180 attendees



“It was great! I love the venue”  
- Event Attendee

“Great job by all !!!!”  
- Event Attendee



## Over \$12,500 raised

- 180 tickets sold 🎟️
- 18 amazing raffle prizes 🎁
- 18 silent auction items 🏠
- \$2000+ raised in the 50/50 draw 💰







# SPECIAL THANKS TO THE CITY OF GUELPH



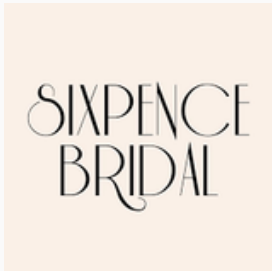
*We would like to extend our sincere thanks to the City of Guelph for their ongoing support of our work and community. We are grateful for their partnership in helping us carry out our mission, and we were honoured to have Councilperson Erin Caton share a few words on behalf of the City at our event.  
Thank you!*

# DONOR APPRECIATION

We would like to extend our deepest gratitude to all our sponsors and donors who made this year's raffle and silent auction possible. Your generosity provided a range of incredible prizes and plays an essential role in helping us continue our mission. We are truly honoured to have such a devoted and giving community standing with us.



Yoga with Chantalle



SINCE 1976



ROYAL ONTARIO MUSEUM







# SPECIAL THANKS

We are so grateful to the generous businesses and partners who contributed high value items for our raffle and silent auction. Special thanks to the Toronto Maple Leafs for the signed Auston Matthews jersey, Industria Pizzeria + Bar for five \$100 gift cards, Team Shody Real Estate for their wonderful prize contributions, Artage Portraits for a \$3,000 photography voucher, and both Speedvale Dental Centre and Natural Choice Medical Clinic for their thoughtful gift baskets. Your generosity brought joy and excitement to our event and plays an essential role in helping us continue our mission.



**Signed Auston Matthews Jersey**



**Five \$100 gift cards**



**Generously donated, silent auction, raffle, and winner's prizes**



**\$3000 value photography voucher**



**Generous Clinic Gift Basket**



**Generous Clinic Gift Basket**

# Summer Workshop HIGHLIGHTS

## *Seeing the Whole Story*

### NEURODIVERGENCE THROUGH AN INTERSECTIONAL LENS

Presented by:



**LDAWC** • Learning Disabilities  
Association of Wellington County

Funded by:



**35+ registered**

Thank you for being part of this important conversation. We're so grateful you took the time to learn with us.

#### **We hope you left with:**

- A stronger understanding of how identity and neurodivergence intersect
- Insight into how to better support youth and families
- Practical tools and real-life examples you can use moving forward

#### **A Special Thank You to Dr. Marsha Myrie Obi**

Thank you, Dr. Myrie Obi, for sharing your voice, expertise, and lived experience with us. Your honesty and insight created a powerful space for reflection and connection.

We're so grateful for the clarity, care, and depth you brought to this conversation—your presence made this workshop truly impactful.





# LOCAL EVENTS



As supporters of the Wellington County community we are thrilled to highlight a number of upcoming local events that might capture your interest

## SCHEDULE OF LOCAL EVENTS



### **GUELPH TODAY EVENTS CALENDAR**

Looking for engaging activities in Guelph? Check out this calendar for local events and programs that might interest you or your family. Explore what's happening in your community.



### **GUELPH PUBLIC LIBRARY**

Guelph Public Library has countless events and programs that will inspire you to explore, connect and thrive. They even take on individual event suggestions, so be sure to participate!



**Guelph Public Library**  
Explore • Connect • Thrive

# Looking for Local Resources?



## Visit our Resources Page

### Categories

- LDAWC Resources
- Educators
- Parents & Caregivers
- ADHD
- Dyslexia
- Kids & Teens
- Post-Secondary
- Service Providers



### LDAWC Resources

Our organization has put together some resources sheets on the following topics about learning disabilities and ADHD. Simply click on a topic below. These sheets include recommended books, websites and articles.

[Learning Disabilities | General](#)[Learning Disabilities | Reading](#)[Learning Disabilities | Writing](#)[Learning Disabilities | Mathematics](#)[IEPs & IPRCs](#)[ADHD | Families](#)[ADHD | Adults](#)[Assistive Technologies](#)[Transition | Secondary Education](#)[Transition | Post-Secondary Education](#)

**Click Here** →

Whether you're an educator, parents/caregiver, or someone impacted by learning disabilities and/or ADHD - there's something to support everyone

If you have ideas on additional resources we can include, email us: [info@ldawc.ca](mailto:info@ldawc.ca)



**LDAWC** • Learning Disabilities  
Association of Wellington County

*Thank you*

We're so grateful for this amazing community. Your support helps us continue providing resources, programs, and advocacy for those with learning disabilities and ADHD.

Together, we're making a difference!

Stay connected, and thank you for being part of this journey with us. Have a great summer!

- The LDAWC Team







# FOLLOW US



**@ldawc**



**Learning Disabilities Association  
of Wellington County**



**Learning Disabilities Association  
of Wellington County**



**Eventbrite:  
LDAWC**



**@LDAWellington**



**[www.LDAWC.ca](http://www.LDAWC.ca)**