



# THE INCLUSION INSIDER

2025 ISSUE #3

DECEMBER 2025



## HAPPY HOLIDAYS!!

As we head into the holiday season, we're grateful for a meaningful fall focused on our Reading Rocks program and our Family Conference. It was wonderful to reconnect with families through both in-person and online learning and to gather together for a day of connection and shared learning. Thank you for being part of our community as we look ahead to the new year.



1000+

STUDENTS SUPPORTED IN THE  
LAST 10 YEARS



Helping individuals and  
their families who have  
learning disabilities to  
reach their full  
potential.





# TABLE OF CONTENTS

## This issue:

Winter Programs are Back!!

PAGE 03

State and Main Fundraiser

PAGE 5

2026 Trivia Night

PAGE 06

2025 Highlights

PAGE 07

Local Events

PAGE 10

Resource Page

PAGE 11

Thanking our Community

PAGE 12

Support & Follow!

PAGES 13



## MESSAGE FROM OUR EXECUTIVE DIRECTOR

As we close out the year, I want to extend my sincere thanks to everyone who helped make this year possible. From our staff and volunteers who dedicated their time and energy, to the families who participated, and the donors and community members who chose to support our mission, your contributions made a real difference.

As we move into the holiday season, I hope you are able to rest, reflect, and enjoy meaningful time with loved ones. Thank you for being part of this work and for continuing to stand with us in supporting individuals with learning disabilities. I look forward to reconnecting in the new year.

Marciane Any  
Executive Director, LDAWC



Feb. 17 – April 30, 2026

Winter Programs



## ✦ Winter 2026 Programs ✦

# READING ROCKS IS BACK! - APPLY TODAY

This winter, Reading Rocks will be the only program running. Designed to build literacy skills, confidence, and a positive relationship with reading, Reading Rocks supports children with learning disabilities and/or ADHD through structured, supportive sessions led by trained volunteers.

The winter session will run from February 17 to April 30, on scheduled program days from 6:30 PM to 7:30 PM, with both in-person and online options, following the same format used this fall. In-person sessions will take place at John Galt Public School. We ask all families to apply for the format that works best for them [either online or in person], and once accepted, participants are expected to remain in the same format for the full program term.

There will be no programming on Family Day (February 16), March Break (March 16–20), or Easter Monday (April 6). Applications are now open, and all families must apply, including those who have participated in the past.

Have questions?

Emails: [ldawcrr@gmail.com](mailto:ldawcrr@gmail.com) or Call: 519-837-2050

## READING ROCKS

Helps students develop  
fundamental literacy  
skills



## BEING OFFERED

M/W in person  
M/W online  
T/Th in person  
T/Th online

## APPLY HERE





# VOLUNTEERS NEEDED

## We need your help supporting local youth

We're looking for passionate volunteers for our Reading Rocks winter 2026 program—supporting kids with learning disabilities and ADHD build confidence and reading skills.

### Details:

- Runs twice a week (choose Mon/Wed or Tues/Thurs)
- 1 hour per session, for 8 weeks
- Can choose to volunteer for either our in person or online program
- Must attend both days of your chosen schedule
- Ages 16+ (18+ require a Vulnerable Sector Check)
- Training and supplies provided—no experience needed!



Both Online & In Person

Make a difference this winter  
Apply now :)

**[Click Here to Apply](#)**

Have any questions?  
Email: [ldawcrr@gmail.com](mailto:ldawcrr@gmail.com)

”

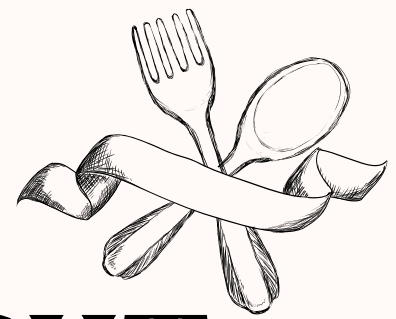
**My child is excited to  
come to reading rocks  
and often asks when  
we are going next  
-RR Parent**







**LDAWC** • Learning Disabilities  
Association of Wellington County



# FUNDRAISING NIGHT

We are pleased to announce that

## **State and Main**

Located at **79 Clair Rd East, Guelph**  
is sponsoring a fundraiser for us!

## **Save the Dates!**



**MONDAY, APRIL 13, 2026**



**TUESDAY, APRIL 14, 2026**

**Both dine-in and telephone take out orders will apply.**



In order for us to receive your donation, **be sure to let the State and Main staff know that you are ordering in support of the Learning Disabilities Association of Wellington County.**



10% of net sales over the 2 day period will be donated to the Learning Disabilities Association of Wellington County.

We are deeply appreciative of State and Main Guelph's support of our organization and for supporters like you!

We hope to see you there!





## TRIVIA HOSTS

*Jeff & Miranda's  
Trivia Nights*

# LDAWC TRIVIA NIGHT

A Fundraising Effort for  
those Impacted by  
Learning Disabilities



**SATURDAY, MAY 2, 2026**  
**7PM - 11PM**  
135 FERGUSON STREET, GUELPH,  
ON N1E2Y7

**\$190 FOR TABLE OF 8**  
**\$140 FOR TABLE OF 6**  
**\$25 PER PERSON**

Join us for an evening of fun-  
filled activities, good food,  
drinks, and learning more about  
how you can help those with  
learning disabilities!

\*Attendees must be 19+





**LDAWC** • Learning Disabilities  
Association of Wellington County

*The right to learn, the power to achieve*

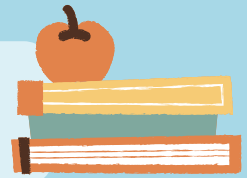
# 2025

# HIGHLIGHTS





# 2025 REPORT



*This year reflected the resilience of our community. Even during a challenging time for many families and nonprofits, we're proud of what we've accomplished together. Thank you for standing with us and being a vital part of a year that asked a lot from everyone.*

## Students Supported

Our goal was to reach at least 50 students this year. We've been able to support 35 local students through our free, high quality, research backed Reading Rocks program.



01

## Volunteer Hours

We've had more than 40 volunteers with us and over 600 volunteer hours completed!



02

## Community Reach

We've had a impact on more than 350 individuals, including participants in our programming and events, as well as those we supported through advocacy and guidance.



03



## Fundraising

Our grassroots organization has been able to raise around \$45,000 this year in grants, donations, and sponsorships. We are incredibly grateful for the generosity of our community.

04



**LOOKING FORWARD TO A BRIGHTER FUTURE**







# THANK YOU DONORS



*A special thank you to our donors. During a year that asked a lot from families, businesses, and nonprofits alike, your generosity helped us continue supporting individuals with learning disabilities and ADHD. We're deeply grateful for your continued support and for standing with us every step of the way.*

## Program Supporters



## Trivia Night Supporters



## Family Conference Supporters



## Workshop Supporters



THANK YOU FOR HELPING MAKE OUR MISSION POSSIBLE

# LOCAL EVENTS



As supporters of the Wellington County community we are thrilled to highlight a number of upcoming local events that might capture your interest

## SCHEDULE OF LOCAL EVENTS



### **GUELPH TODAY EVENTS CALENDAR**

Looking for engaging activities in Guelph? Check out this calendar for local events and programs that might interest you or your family. Explore what's happening in your community.



### **GUELPH PUBLIC LIBRARY**

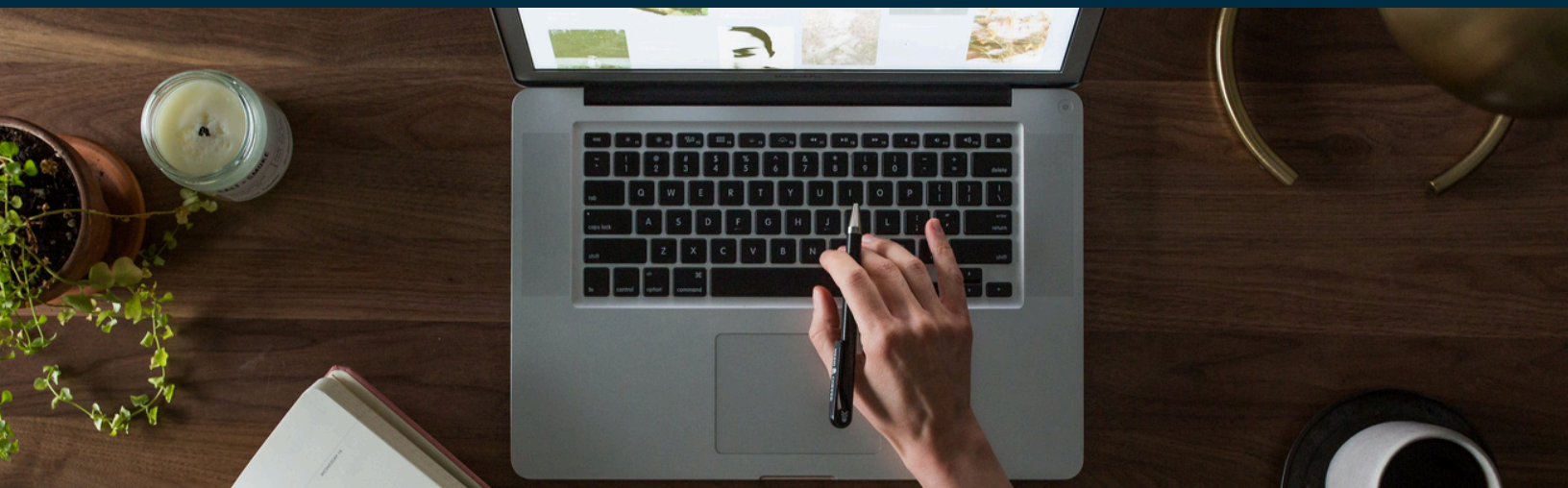
Guelph Public Library has countless events and programs that will inspire you to explore, connect and thrive. They even take on individual event suggestions, so be sure to participate!



**Guelph Public Library**  
Explore • Connect • Thrive



# Looking for Local Resources?



## Visit our Resources Page

### Categories

LDAWC Resources

Educators

Parents & Caregivers

ADHD

Dyslexia

Kids & Teens

Post-Secondary

Service Providers



### LDAWC Resources

Our organization has put together some resources sheets on the following topics about learning disabilities and ADHD. Simply click on a topic below. These sheets include recommended books, websites and articles.

Learning Disabilities | General

Learning Disabilities | Reading

Learning Disabilities | Writing

Learning Disabilities | Mathematics

IEPs & IPRCs

ADHD | Families

ADHD | Adults

Assistive Technologies

Transition | Secondary Education

Transition | Post-Secondary Education

**Click Here** →

Whether you're an educator, parents/caregiver, or someone impacted by learning disabilities and/or ADHD - there's something to support everyone

If you have ideas on additional resources we can include, email us: [info@ldawc.ca](mailto:info@ldawc.ca)



**LDAWC** • Learning Disabilities  
Association of Wellington County

*Thank you*

As the year comes to a close, we want to extend a heartfelt thank you to our community. This past year asked a great deal of families, organizations, and supporters alike, and your continued care, generosity, and encouragement meant more than we can express.

Because of you, we were able to continue supporting children, youth, and families impacted by learning disabilities and ADHD through accessible programs and events.

We are deeply grateful to everyone who volunteered, donated, shared our work, attended events, and stood with us during both the busy and quieter moments. Your belief in inclusion, access, and community makes this work possible.

As we move into the holiday season, we hope you are able to take time to rest, reflect, and connect with those who matter most to you. If you are able to continue supporting our work, your generosity helps ensure these programs remain free and accessible to the families who need them most.

Wishing you warmth, peace, and rest this holiday season, and thank you for being such an important part of our community. ❤️







# LDAWC • Learning Disabilities Association of Wellington County

As we look toward the new year, we wanted to share how continued community support helps sustain the work you've stood behind all year.

At LDAWC, we remain committed to keeping our programs and educational workshops completely free for families. As referrals continue to increase and more families reach out for support, community generosity plays a critical role in allowing us to meet this growing need without placing additional financial strain on those we serve.

Because of donors like you, we have been able to support hundreds of students through programs such as Reading Rocks, Executive Skills, Social Skills, and SOAR, while also providing meaningful volunteer opportunities for local youth. These programs remain accessible because of ongoing community care and investment.

***This holiday season, even a small gift can have a meaningful impact:***

- \$10 helps provide printed materials for a child in one of our programs
- \$25 supports materials for our free educational workshops
- \$50 contributes to program supplies for Reading Rocks, Executive Skills, or Social Skills
- \$100 helps us develop new programming, including the math support families have been requesting
- \$250 supports the cost of a full session of Reading Rocks for a child, helping us keep programming free
- \$500 or more helps sustain our most in-demand programs and supports growth as need continues to rise

Your generosity helps ensure families in Guelph-Wellington County never have to choose between paying essential bills and supporting their child's learning. It allows us to continue offering accessible support at a time when demand is higher than ever.

Thank you for standing with us and for continuing to support children, youth, and families in our community. We are deeply grateful for your partnership and wish you a warm, peaceful, and hope-filled holiday season.

**Donate**  
**Today.**





# FOLLOW US



**@ldawc**



**Learning Disabilities Association  
of Wellington County**



**Learning Disabilities Association  
of Wellington County**



**Eventbrite:  
LDAWC**

**@LDAWellington**



**[www.LDAWC.ca](http://www.LDAWC.ca)**